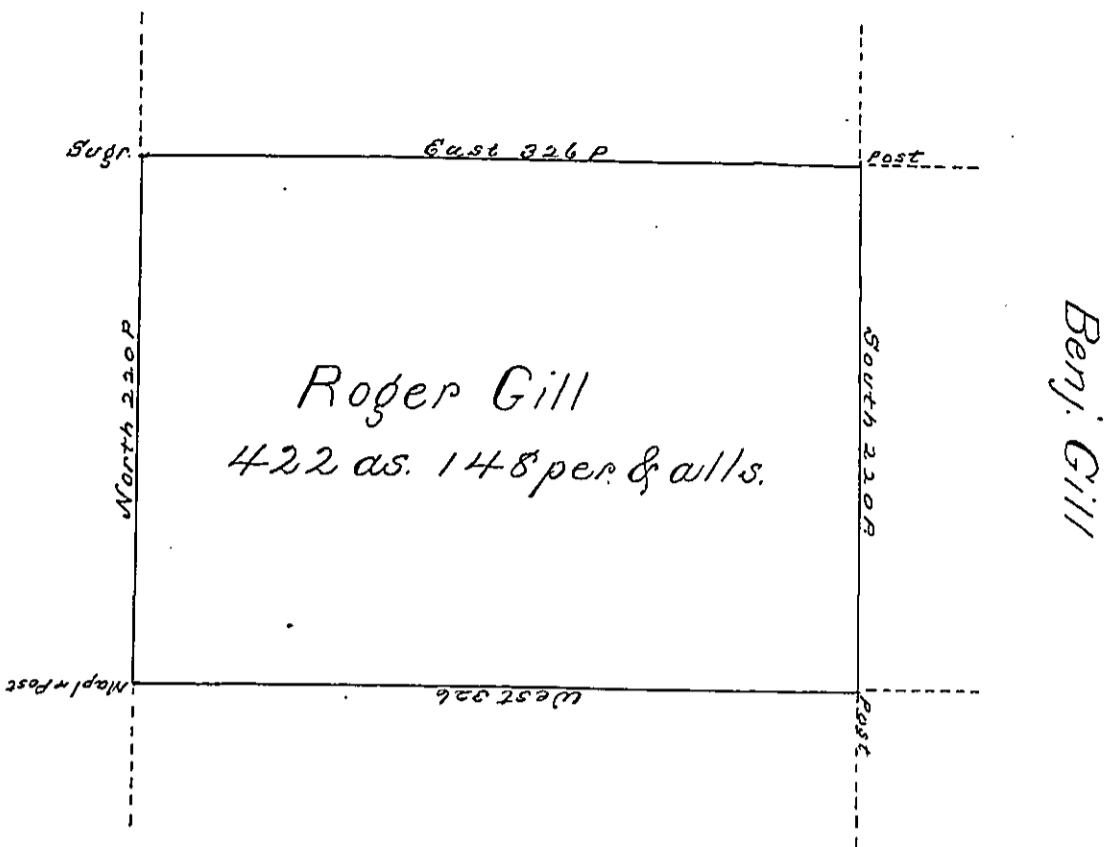


Richd. Gill



Robert Gill

Situate on the East side of French Creek
in Allegheny County containing 422 acres and
148 perches and allowance of Six p. Cent for Roads
&c. Surveyed the 20th. day of June 1795. In pur-
suance of a Warrant dated the 10th. day of April
1793

Wm. Power Dy Sr.
To Daniel Brodhead Esquire }
Surveyor General }

IN TESTIMONY that the above is a copy of the original remaining on file in
the Department of Internal Affairs of Pennsylvania, made
conformably to an Act of Assembly approved the 16th day of
February, 1833, I have hereunto set my Hand and caused
the Seal of said Department to be affixed at Harrisburg,
this third day of October 1899

James W. Latta
Secretary of Internal Affairs.